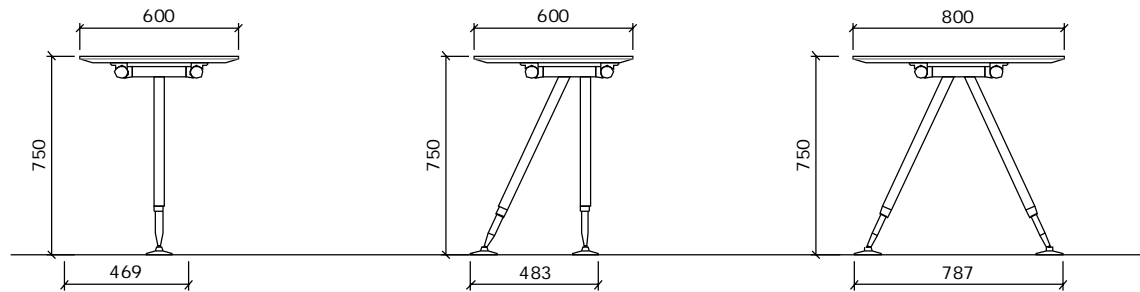
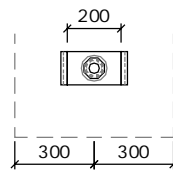


stan

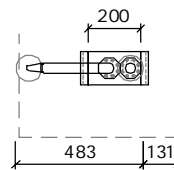
200 wide Bridge



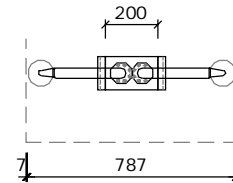
SIDE VIEW



Straight Leg



Angle leg &
Straight Leg

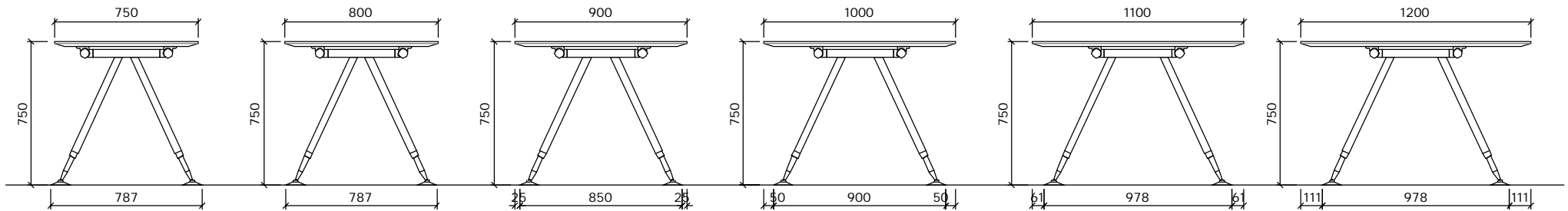


Minimum of Leg Length
-Angle Leg

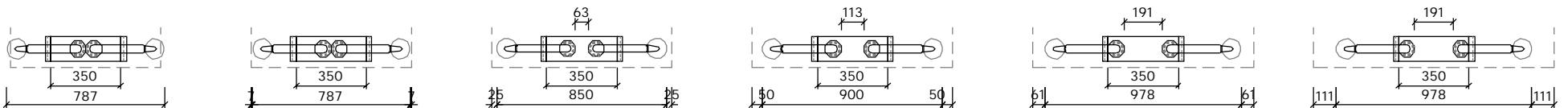
TOP VIEW

stan

350 wide Bridge



SIDE VIEW



Minimum of Leg Length
(for 750D worktop)

Leg Length -A
(for 800D worktop)

Leg Length -B
(for 900D worktop)

Leg Length -C
(for 1000D worktop)

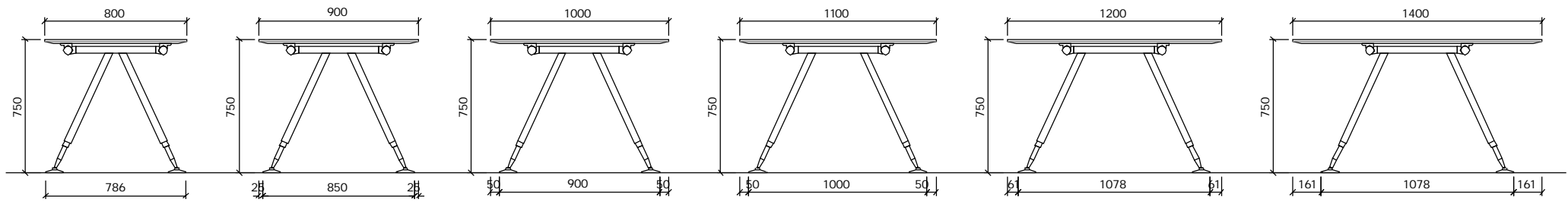
Leg Length -D
(for 1100D worktop)

Maximum of Leg Length
(for 1200D worktop)

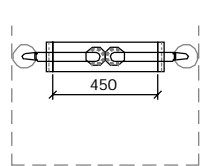
TOP VIEW

stan

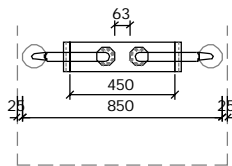
450 wide Bridge



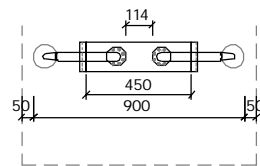
SIDE VIEW



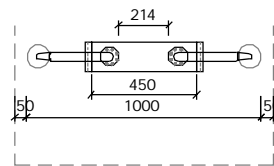
Minimum for Leg Length
(for 800D worktop)



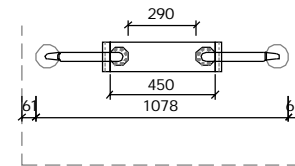
Leg Length -A
(for 900D worktop)



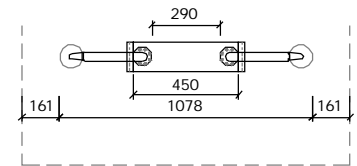
Leg Length -B
(for 1000D worktop)



Leg Length -C
(for 1100D worktop)



Leg Length -D
(for 1200D worktop)

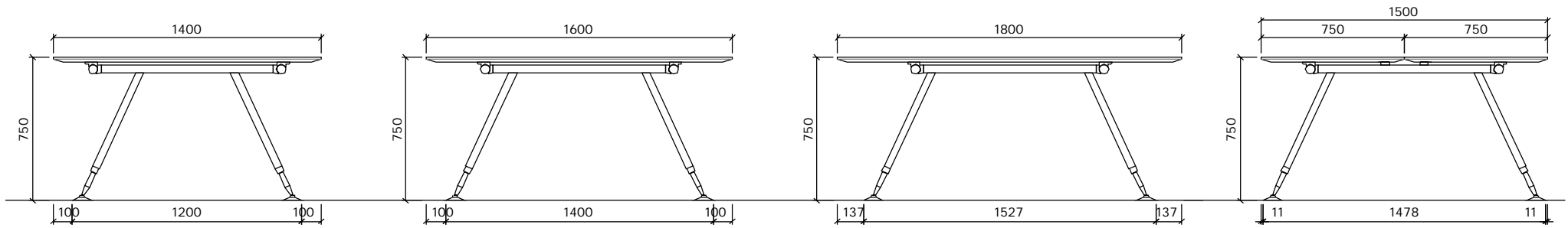


Maximum of Leg Length
(for 1400D worktop)

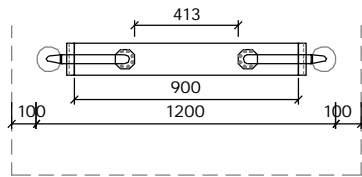
TOP VIEW

stan

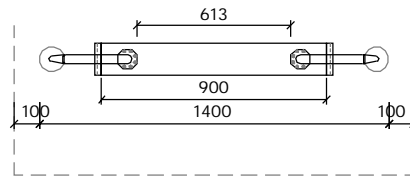
900 wide Bridge



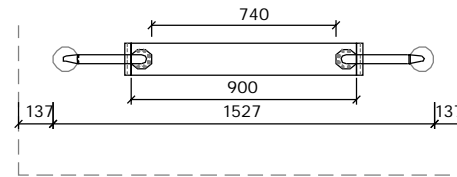
SIDE VIEW



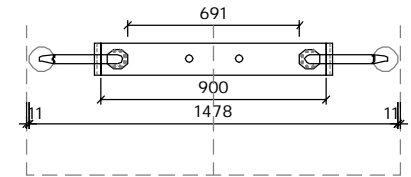
Minimum for Leg Length
(for 1400D worktop)



Leg Length -A
(for 1600D worktop)



Maximum of Leg Length
(for 1800D worktop)



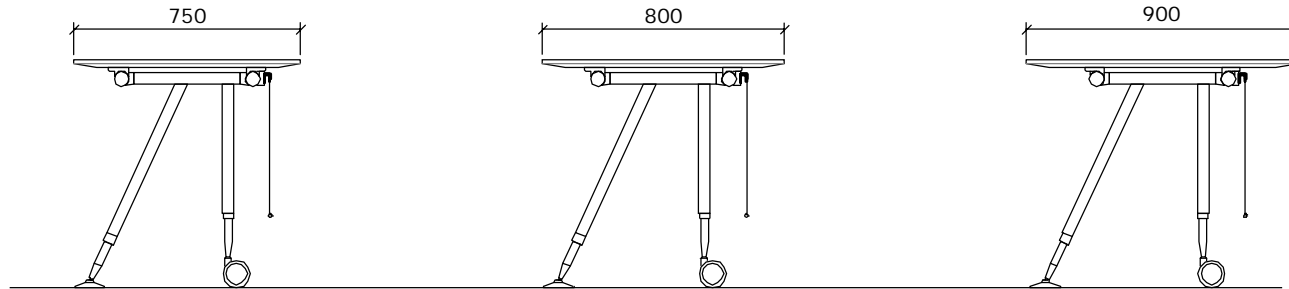
Option 1500D Worktop
(for 2 x 750D worktop)

TOP VIEW

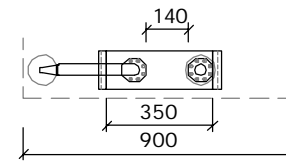
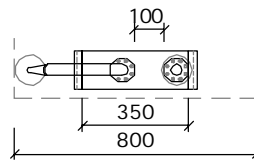
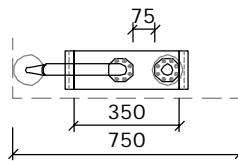
stan

Training Leg

WS D750, D800 & 900D



SIDE VIEW



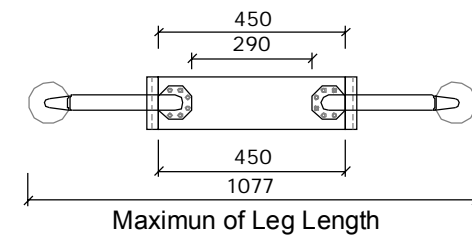
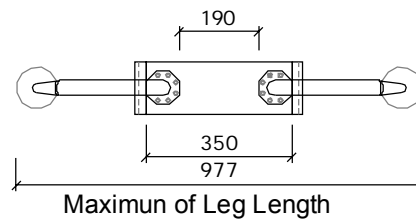
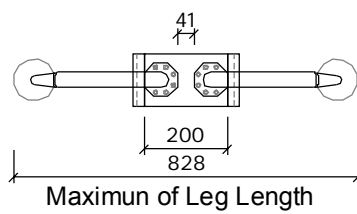
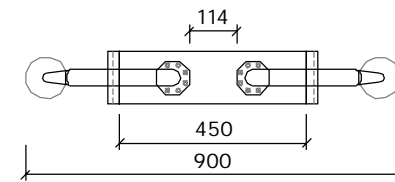
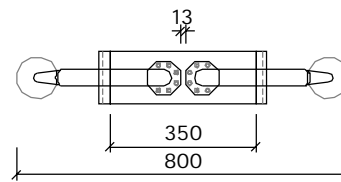
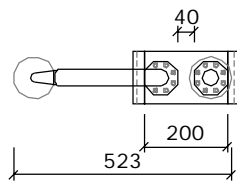
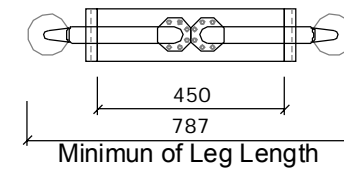
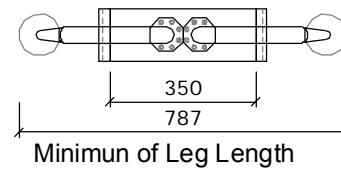
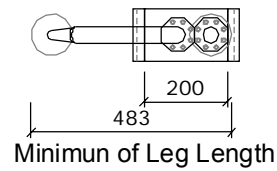
Proposed bridge size

350W Bridge

TOP VIEW

stan

Dim. of Stan Leg & Bridge Length



200W Bridge

350W Bridge

450W Bridge